



Project \_\_\_\_\_  
 Item \_\_\_\_\_  
 Quantity \_\_\_\_\_  
 CSI - 11400 \_\_\_\_\_  
 Approval \_\_\_\_\_  
 Date \_\_\_\_\_



## 30VP-2 & 50 VP-2 Vegetable Peelers

- Fast accurate peeling
- 30VP-2 peels 30 lbs. of potatoes in 45 seconds
- 50VP-2 peels 50 lbs. of potatoes in 1 minute
- Less than 12% weight loss
- Abrasive is bonded to disk, hopper and door
- Stainless steel disc with unique wave pattern

### STANDARD FEATURES

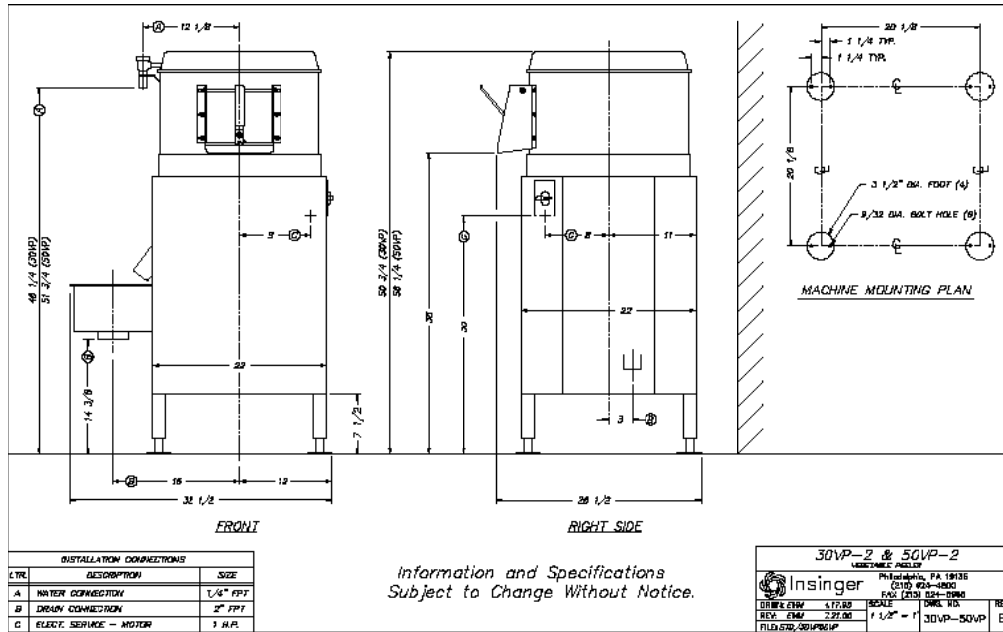
- Stainless steel hopper, cabinet, feet, peel trap, screen, disc and discharge door
- Stainless steel sides, disc and discharge door coated with Insinger's exclusive bonded silicone carbide

### OPTIONS

- 1 minute timer
- Integral disposer
- Drawer



# Additional Information



## Capacity Per Hour

30 VP-2	30 lbs. in 45 seconds
50 VP-2	50 lbs. in 1 minute

## Shipping Weight

30 VP-2	242 lbs.
50 VP-2	262 lbs.

## Current Draw Amps

	30VP-2	50VP-2
115/1/60	13.8	16.0
208/1/60	7.6	8.8
230/1/60	6.9	8.0
208/3/60	3.5	4.6
230/3/60	3.2	4.2
480/3/60	1.6	2.1

## SPECIFICATIONS

**CONSTRUCTION-** The hopper, cabinet, feet, peel trap, screen, disc, discharge door and chute are all fabricated from type 304 #18-8 stainless steel. The drain and fill line are made of copper and the hopper cover is made of aluminum.

**ABRASIVE DISC-** The special Insinger abrasive disc has a unique wave pattern in the stainless steel and a permanently bonded silicone carbide abrasive for long life. The light-weight stainless disc with its stainless hub attachment to alloy shaft prevents corrosion and allows easy removal for thorough cleaning.

**DISCHARGE-** The stainless steel discharge door and hinge pin incorporates an easy lock-and-release lever. The stainless steel chute is removable for easy cleaning

**DRIVE-** Standard frame motor (30VP-2: 3/4 hp. 50VP-2: 1 hp), with "V" belt drive provides direct speed reduction between motor and peeling disc. The "V" belt motor drive design has a shock absorber effect to prevent damage in event of a jam or overload. All bearings are sealed and permanently lubricated.

**HOPPER-** Stainless steel hopper with silicone carbide abrasive permanently bonded to sides and discharge door. Insinger's unique bonding technique provides quick positive peeling and long service from the abrasive.

**FEET-** Adjustable stainless steel feet designed to be bolted to almost any type of floor surface.

**SWITCH-** Toggle type or push-button station, located on the right side of the discharge chute as standard.

Contact Insinger Sales at 800-344-4802 for an installation drawing specific to your application.

This drawing is available on the Insinger website at [www.insingermachine.com](http://www.insingermachine.com)

Note: Due to product improvement we reserve the right to change information and specifications without notice.